

Monday

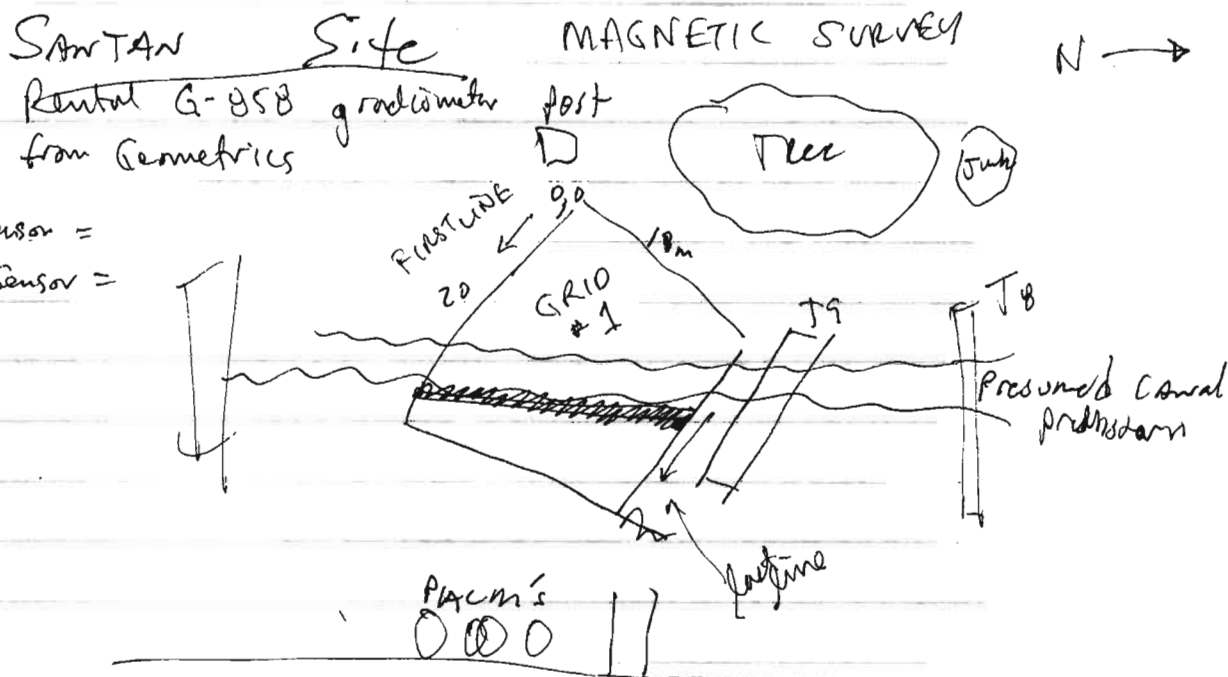
10:15 AM loc.

5/22/00

GILA RIVER INDIAN RES.

Geophy. Crew: J. H. UDRBRAND UCSD
 L. CARYERS DU
 S. WIGGINS UCSD

Archaeo Crew: JOHN Ravesloot
 BOB Neely
 MIKE Foster
 CHRIS

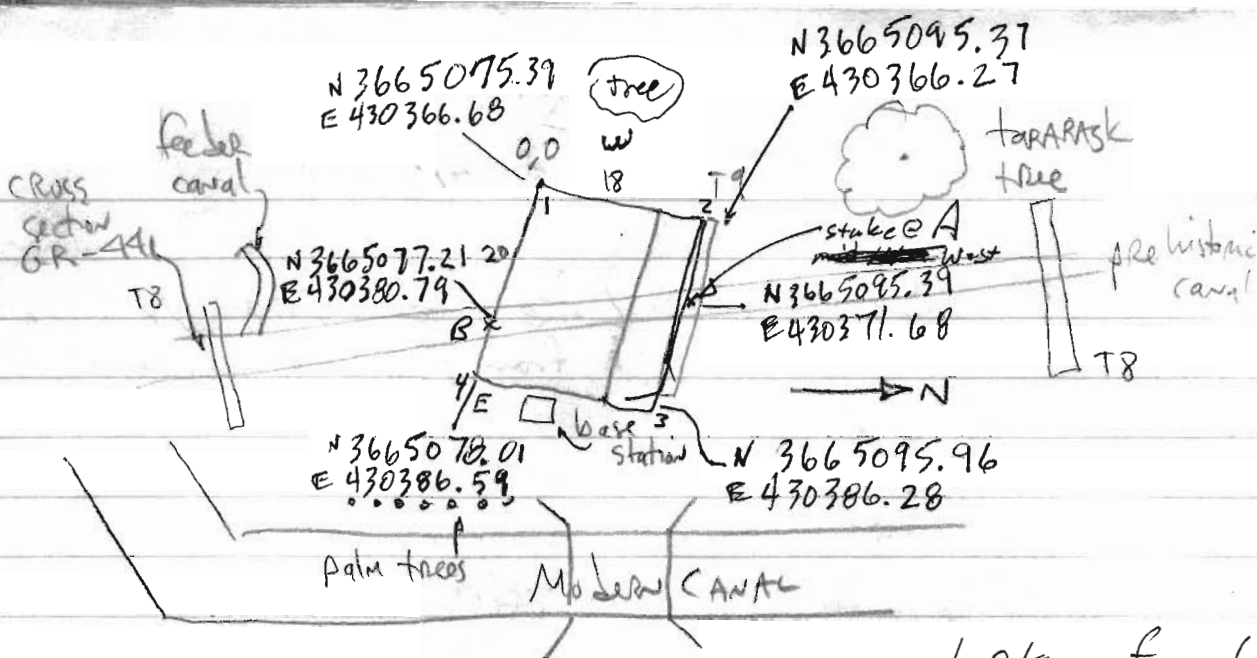


10:30 AM

Received Boxes UPS W. 1st Phoenix

Russ

82 Square	17812528	1000	238	1
63 rect	17812628	1000	238-3	6



Lots of metal

MAG Survey - JAH mag man
 START @ 0,0 (west end) 11⁰⁰ AM loc.

CHRIS & SEAN - tape covers
 West EAST

20m lines @ 0.5m offsets

note E goes from 0 to 18
 W goes from 20 to 38

Note 0,0 metal piece on East end
 Tape @

- 17.5
- 16.0
- 14.5
- 13.0
- 11.5
- 10.0
- 8.5
- 7.0
- 5.5
- 4.0
- 2.5
- 1.0

11¹⁰ AM

11¹³

11¹⁸

11²²

11²⁵

STOP @

STAKE A

@ mid trench of
 mid CANAL

14.6m from #3

or #1
 5.4m East from 0,0

17.2m N from 0,0

STAKE B mid CANAL

5.9m from #4

or #1 (0,0)
 14.1m from

5/22/00

12:20 PM

GILA

SANTAN SITE

Seismic
Crew

Seismic Line @ 9m N
from East to West

Hildebrand
Wiggins
Chris
Mike

Stratavim Setup

Date: 052200

Fib: 1

Sample interval: 0.25 ms

length: 0.125 sec

delay: -10ms

Two sources ~~from~~ ball pen
SILVERWOOD

Geophones @ 9m North

Shot @ 8.95m N



1.25m shots apart

.20m shot interval

Shot # | $x = \phi m$

2 | $x = 1.25$

last phone
BOLT

SOLenoid = 0.20 # Records
 Hammer = Even # "

1:05 pm

4. DAT = false trigger

5. = wotting

6. DAT = 1.25 m Hammer

7. DAT = 0.20 m SOLenoid

19. DAT = SOLenoid

20. DAT = Hammer @ 0.8 m

Hammer
 round
 end
 slips

→ use
 flat end of
 Bolt (pearl)

1.85 shots = 1.80

2.05 = 2.00 Redo

1.85 m = 25. DAT SOLenoid

1.85 m = 26. DAT Hammer

2.05 m 27 SOLenoid

2.05 28 Hammer

2.25 29 ~~Hammer~~ Sol

2.25 30 Hammer

1:30

Water phones

Back 68R goby 2.45 34

150 lb water plus 2.00 m 43 SOLenoid

2.00 m 43. DAT SOLenoid

Boyle tide 2.85 58. DAT Hammer

157 av water phone windy HIGH AREA

9th
water plus

2:03 3.60 26. DAT Hanner
2:11 6.25 106. Hanner

water plus

2:18 6.00 124. DAT Hanner
Break

2:31 8.45 150 Hanner

2:46 8.80 180 Hanner

water

Windy

2:52 10.00 204. DAT Hanner

2:55 11.35 218. DAT Hanner

Break - Lunch

3:40 10.80 219. DAT S. J. B. W. H.

Little Wind (Dried down)

3:51 13.20 268. DAT Hanner

4:05 16.00 320. PAT Hanner

WINDY

4:15 18.00 360. DAT Hanner

4:20 20.05 378. PAT Hanner

← Last shot

no wind.

GILIA / SANTAN site

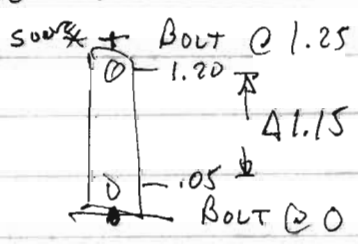
5/22/00

DIA 052200
 FILE: 1001
 length: 1.250 sec
 sample interval: 0.25MS
 delay: -10ms

Stationary Vibrator triggered off of solenoid trigger
 10Hz - 400 Hz

Delayed

Need to do WALK Away
 Line 9m



offset source 1.15m

DIA 052200
 File 1001.DAT 1st
 length 1.250 sec
 sample interval 0.25ms
 delay -10ms

Marker Source

1001.DAT	⊙	1.25	1006	7.00
1002.DAT	⊙	2.40	1008	8.15
AD03.		3.55		
1004		4.70		
1005		5.85		

5-22-2000

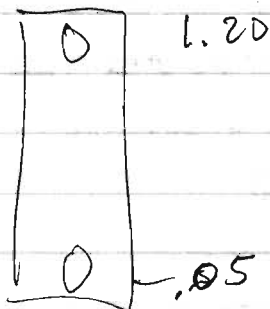
6 pm	Walk away	
1009		1.25
1010		2.40
1011		3.55
1012		4.70
1013		5.85
1014		7.00
1015	1014?	8.15

1015/1016 false trigger

LOG Sweep
 Vib \approx 10 Hz start
 \approx 400 Hz stop
 duration = 1 sec
 w/ wave tech 11 MHz
 mode 22

6:15 Surface wave exp
 1st dir 052200
 file 2001
 sample rate 0.25 ms
 length 1.250 sec
 delay -10ms

2001.DAT \approx 2.35m = source = ~~exp~~ 2.35 m



5-22-2000

x =

50

x =

2002 phon #1 = 2.35

3.50 = Source

2003 3.50

4.65 = source

2004 4.65

5.80 = source

2005 5.80

6.95 "

2006 6.95

8.10 "

2007 8.10

9.25 "

EXTRA TRIGGER ?

~~2008~~ really 2009

9.25

10.40

2009

2010 10.40

11.55

2011 11.55

12.70

2012 12.70

13.85

2013 really 2014 Extra Trigger ?

13.85

15.00

~~2014~~ 2015 15.00

16.15

2016 16.15

17.30

2017 17.30

18.45

2018 18.45

19.60

2019 19.60

20.75

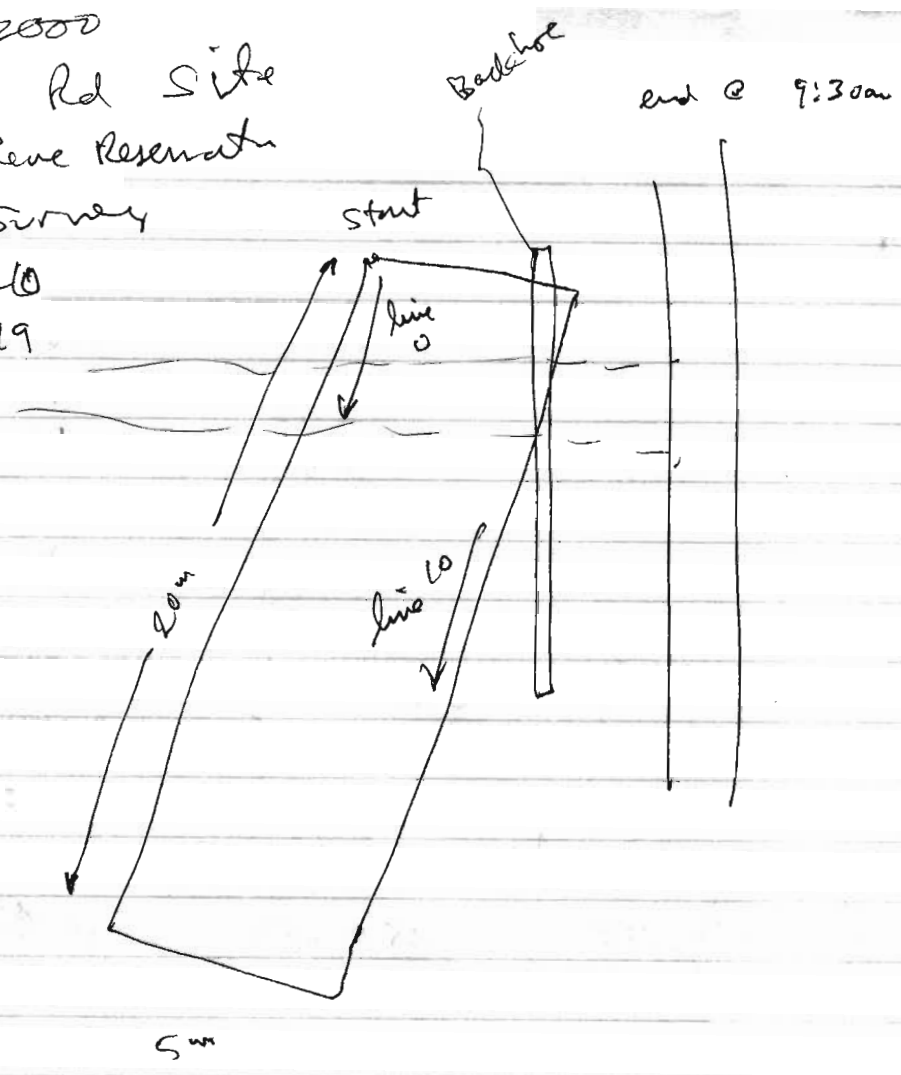
END

5-23-2000

Crown Rd Site
Gla Rene Reservoir
Mag Survey

top = 710
bot = 199

file = 2



S-23-2000

G-415 S.C. Gila River Res.

MAG Gradienter G-858

Top = 740

Bot = 199

GRID STAKES

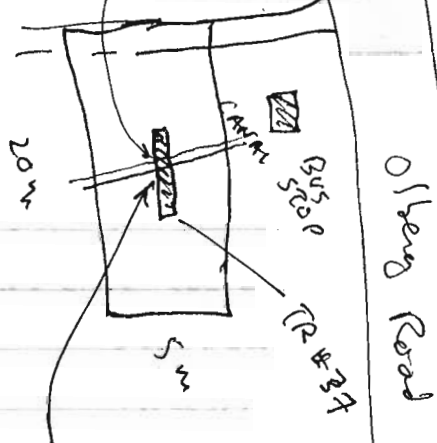
SW N 3660273.02
E 435958.33

SE N 3660272.5
E 435965.31

ME N 3660292.41
E 435965.14

NW N 3660292.92
E 435960.20

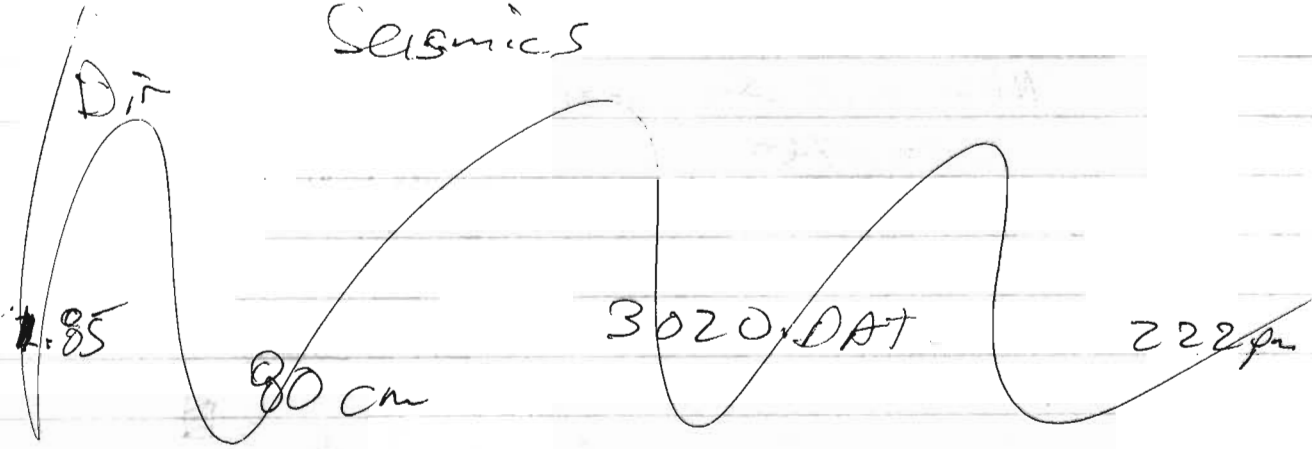
Canal Stake
N 3660284.76
E 435965.04



N 3660281.79
E 435964.93
Canal Stake

G-416

Seismics



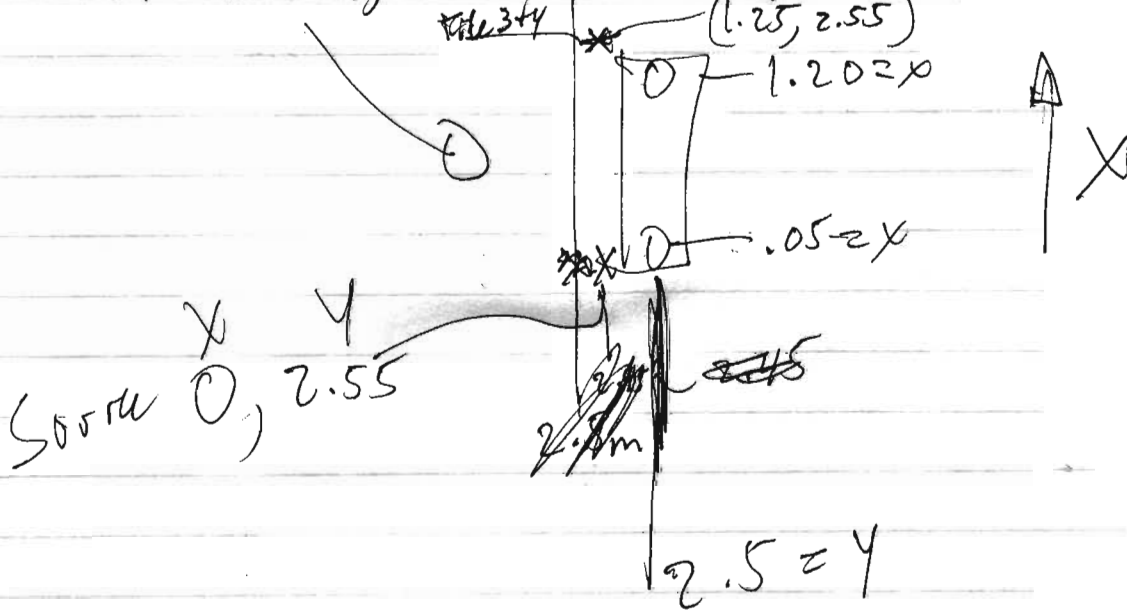
Dir 05 2300

Sample interval 0.25 ms

Sample delay 0.128 Sec

Delay -10ms

File # 1,2 3021.DAT @ 0 m



World ebomb, wiggins, Comers

	Time	File	Loc 1	Loc 2
Body	2:26	3021	0.0	
	30	3031	1.0	water
	33	61	2.0	
	35:30	30 81	3.0	water
	38	30		
Messup		3101		525 Hammer
messup		3102	4.20 4.20	SOLBROOD

Lefty Rod out now 3103

	2:43	3118	5.0	SOLBROOD
	2:46	3138	6.0	SOLBROOD
	2:48	3158	7.0	"
				"
missed?	2:51	3176	8.0	
2	2:52	3181	8.2	SOLBROOD
missed 1?	54	3197	9.0	SOLB
		3208	9.2	SOLBROOD
	57	3217	10.0	"
WIND	2:59	3237	11.0	SOL
	3:02	3257	12.0	SOL
	64	3277	13.0	"
	3:07	3297	14.0	SOL
	Break		15.0	
	3:13	3317	15.0	
	15	37	16.0	SOL
	18	57	17.0	
	21	77	18.0	
last slot	324	3396	20.05	Hammer

5/23/00 3:31

Wait

Away
Buy

#124 @ 0.05

#1 @ 1.20

~~False trigger~~

Source

@ 1.25

4002

2.40

3.55

4.70

5.85

file # = 4005.dat

4006.dat

4007.dat

Avg Bandwidth = 1250 bps

interval = 0.025 sec

delay = -10 msec

hammer @ 1.25 m

2.40 m

3.55 m

4008.dat

4009.dat

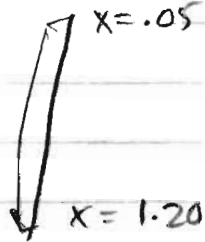
4.70 m

5.85 m

G-415

5-23-2000

vibe = by sweep 10-400 Hz 1 sec duration



Acq = 1925 sec

• 2.35 source

geophone array

0.5 → 1.20

file = ~~5000.dat~~

5000.dat

VIB
x = 2.35 m

2.35

5002.dat

3.50

3.50

5003.dat

4.65

4.65

5004.dat

5.80

5.80

5005.dat

6.95

6.95

5006.dat

8.10

8.10

5007.dat

9.25

9.25

5008.dat

10.40

10.40

5009.dat

11.55

11.55

5010

12.70

12.70

5011

13.85

13.85

5012

15.00

15.00

5013

16.15

16.15

5014

17.30

17.30

5015

18.45

18.45

5016

19.60

19.60

5017

20.75

V.B
fell over @ end

last one